

**LIST OF DRAWINGS**

Sheet List	
Sheet Number	Sheet Name
<b>ARCHITECTURAL</b>	
A000	COVER SHEET
A002	BUILDING CODE MATRIX/WALL TYPES/NOTES/LEGEND
A003	FIRE SEPARATION PLANS
A201	GROUND FLOOR PLAN
A202	TYPICAL FLOOR PLAN
A203	ROOF PLAN & DETAILS
A204	RCP @ GROUND FLOOR
A205	RCP @ TYPICAL FLOORS
A301	EXTERIOR ELEVATION I
A302	EXTERIOR ELEVATION II
A401	BUILDING SECTIONS
A402	WALL SECTIONS
A403	PORTA COCHERE SECTIONS AND DETAILS
A501	STAIR PLANS, SECTIONS AND DETAILS
A601	DOOR SCHEDULE
A603	WINDOW SCHEDULE
A701	ENLARGED PLANS
A702	ENLARGED PLANS
A703	ENLARGED PLANS
A801	BARRIER FREE WASHROOM REQUIREMENTS
<b>STRUCTURAL</b>	
S1.1	STANDARD NOTES
S1.2	STANDARD NOTES AND DETAILS
S1.3	STANDARD NOTES AND DETAILS
S2.0	SCHEDULES
S2.1	FOUNDATION PLAN & GROUND FLOOR PLAN
S2.2	SECOND FLOOR PLAN
S2.3	TYPICAL FLOOR PLAN (3RD & 4TH)
S2.4	ROOF PLAN AND CANOPY ROOF PLAN
S3.1	SECTIONS
S3.2	SECTIONS
S3.3	SECTIONS
<b>MECHANICAL</b>	
M101	UNDER SLAB LAYOUT PLUMBING
M102	GROUND FLOOR LAYOUT PLUMBING
M103	SECOND FLOOR LAYOUT PLUMBING
M104	THIRD FLOOR LAYOUT PLUMBING
M105	FOURTH FLOOR LAYOUT PLUMBING
M106	ROOF LAYOUT PLUMBING
M107	TYPICAL APT LAYOUT PLUMBING
M108	TYPICAL APT LAYOUT PLUMBING
M109	TYPICAL APT LAYOUT PLUMBING
M110	TYPICAL APT LAYOUT PLUMBING
M201	GROUND FLOOR SPRINKLER
M202	TYPICAL FLOOR SPRINKLER
M203	GROUND FLOOR LAYOUT HVAC
M204	SECOND FLOOR LAYOUT HVAC
M205	THIRD FLOOR LAYOUT HVAC
M206	FOURTH FLOOR LAYOUT HVAC
M207	ROOF LAYOUT HVAC
M208	TYPICAL APT LAYOUT HVAC
M209	TYPICAL APT LAYOUT HVAC
M210	DETAILS HVAC
M211	SCHEDULE HVAC
<b>ELECTRICAL</b>	
E100	LEGEND AND SCHEDULES — ELECTRICAL
E101	SITE PLAN — ELECTRICAL
E201A	GROUND FLOOR PLAN — LIGHTING LAYOUT
E201B	TYPICAL FLOOR PLAN — ELECTRICAL LAYOUT
E202	GROUND FLOOR PLAN — POWER & SYSTEMS LAYOUT
E203	ROOF PLAN — ELECTRICAL LAYOUT
E300	TYPICAL SITES — ELECTRICAL LAYOUT
E400	DETAILS — ELECTRICAL
E500	POWER DISTRIBUTION SINGLE LINE DIAGRAM
E501	FIRE ALARM/SMER AND ZONES SCHEDULE
E502	COMMUNICATION RISER DIAGRAM
E600	PANELBOARDS SCHEDULES

# RIVERSIDE APARTMENTS - COLLINGWOOD

## ISSUED FOR PERMIT (2017-12-22)



**LIST OF CONSULTANTS:**

**ARCHITECT:**  
 Mataj Architects Inc.  
 96 Forsythe St.  
 Oakville, ON L6K 3J8  
 T: 905.281.4444; 1.855.830.6309

**CIVIL:**  
 CROZIER & ASSOCIATES  
 40 HURON STREET, SUITE 301  
 COLLINGWOOD, ON L9Y 4R3  
 T: 705.446.3510; FAX: 705.446.3520

**Structural:**  
 SWS Engineering Inc.  
 1100 Central Parkway West  
 Unit 15, 2nd Floor, Mississauga, ON L5C 4E5  
 Tel: (905) 272-1938 FAX: (905) 272-8254

**MECHANICAL / ELECTRICAL:**  
 EJS ENGINEERING LTD.  
 20 NOBLE OAKS RD  
 BRAMPTON, ON L9Y 2Z6  
 Tel: 905.216.0898

# RIVERSIDE APARTMENTS - COLLINGWOOD

metal  
 1000 SHEPPARD AVENUE EAST  
 SUITE 100  
 SCARBOROUGH, ONTARIO M1S 1T2  
 TEL: (416) 291-1111  
 WWW.METALARCHITECTS.COM

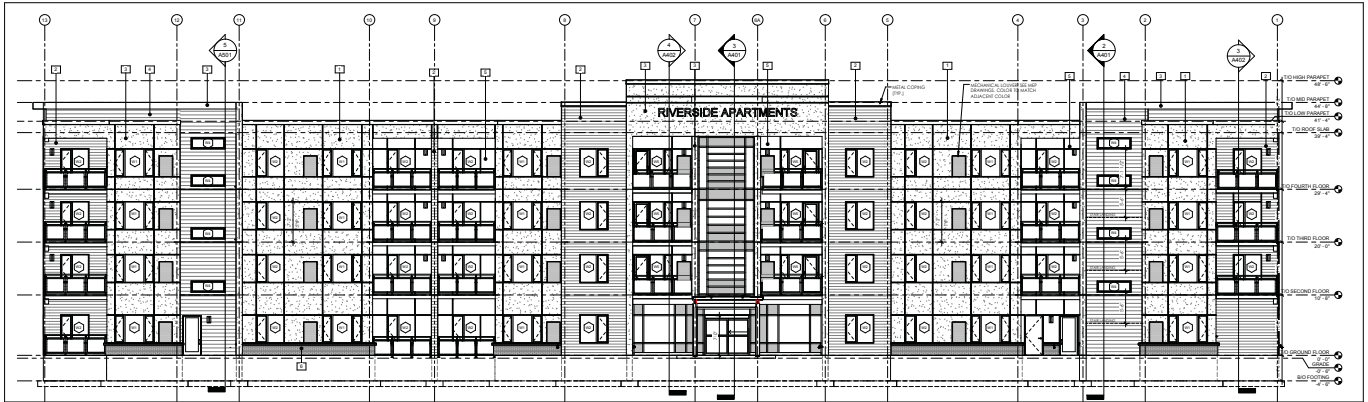
PROJECT: RIVERSIDE APARTMENTS  
 ARCHITECT: MATAJ ARCHITECTS  
 DATE: 12/22/17  
 DRAWN BY: J. BROWN  
 CHECKED BY: J. BROWN  
 SCALE: AS SHOWN  
 PROJECT NO: 17-017

DATE: 12/22/17  
 DRAWN BY: J. BROWN  
 CHECKED BY: J. BROWN  
 SCALE: AS SHOWN  
 PROJECT NO: 17-017

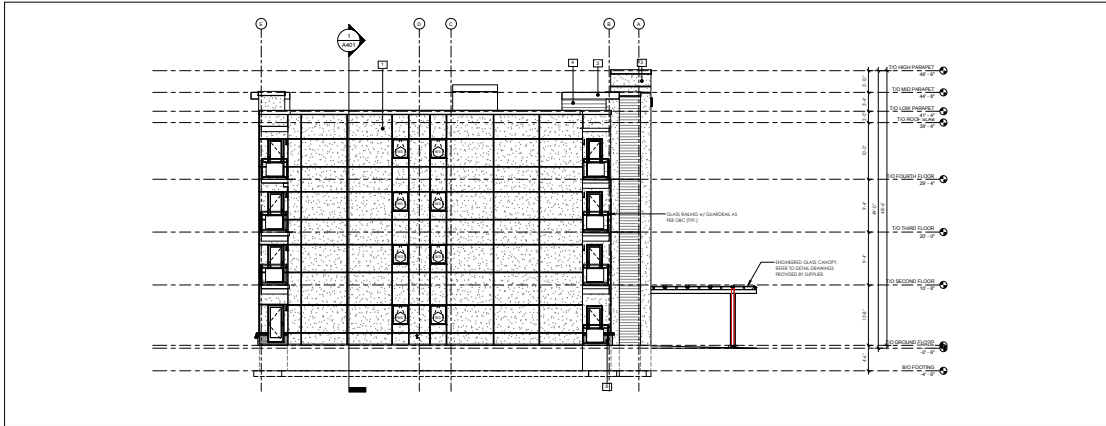
ONARIO ASSOCIATION OF ARCHITECTS  
 100 KING STREET WEST, SUITE 1000  
 TORONTO, ONTARIO M5X 1C4  
 TEL: (416) 593-9100  
 WWW.OAA.AA.AS

**A000**





1 NORTH ELEVATION  
1/8" = 1'-0"



2 EAST ELEVATION  
1/8" = 1'-0"

#	MATERIAL / FINISH	COLOR
1	EPS PANEL WITH GROUTED FRESH	ATMOSPHERIC
2	ALUMIN. SCREWS WITH PROFILE 'P' BY CHALCO CRIMMINS	LACWOOD
3	EPS PANEL WITH SANDSTONE FINISH	MORTAR
4	EPS PANEL WITH REVEAL CEMENT	DEEP CHARCOAL
5	EPS PANEL WITH CRACKWATER FINISH	MEDIUM GRAY
6	BRICK VENEER	DARK TAPE
7	WINDOW WALL INFOPANEL	CLEAR
8	STEPPED WINDOW	CLEAR
9	AUTOMATIC SLIDE	CLEAR
10	PREFINISHED METAL W/TEMPERED GL.	GRAY
11	PREFINISHED LOUNGE TOP	MATCH ALUMINUM FIN.
12	ILLUMINATED SIGNAGE	BLACK (DAY), RED (NIGHT)

# RIVERSIDE APARTMENTS - COLLINGWOOD

**metal**  
MATA ARCHITECTS INC.

PROJECT: RIVERSIDE APARTMENTS  
ARCHITECT: MATA ARCHITECTS INC.  
DATE: 01.13.2017  
SCALE: 1/8" = 1'-0"

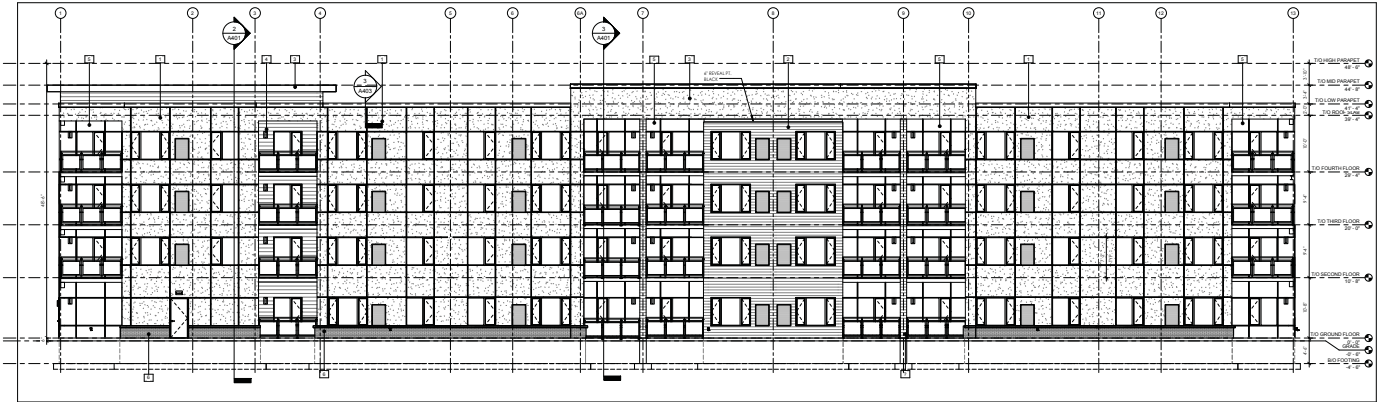
OWNER: COLLINGWOOD ST. COLLEGE  
PROJECT: RIVERSIDE APARTMENTS  
DATE: 01.13.2017  
SCALE: 1/8" = 1'-0"

**ONWARD ASSOCIATION  
ARCHITECTS**  
1000 W. 10TH ST. SUITE 100  
DENVER, CO 80202

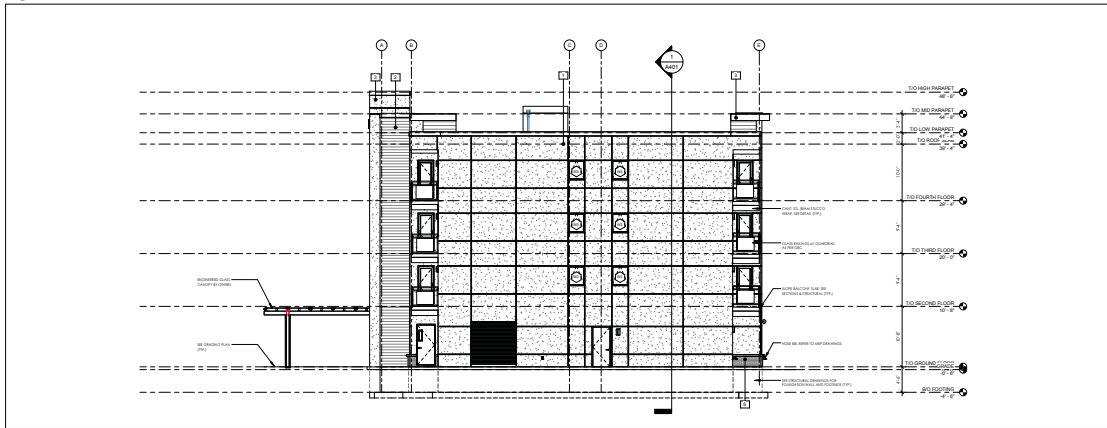
EXTERIOR ELEVATION I

DATE: 02.14.22  
DRAWN BY: JZS

DISTRIBUTION:  
BUILDING PERMIT



1 SOUTH ELEVATION  
1/8" = 1'-0"



2 WEST ELEVATION  
1/8" = 1'-0"

#	MATERIAL / FINISH	COLOR
1	SSS PANEL WITH GRANODIOME FINISH	ARMADILLO
2	ALUMINUM JOISTS WITH FINISH (BY IDEAL OR SIMILAR)	LACERWOOD
3	SSS PANEL WITH SANDSCOTCH FINISH	IVORY
4	SSS PANEL WITH REVEALS, CHROMATEX	DEEP OMBREAL
5	SSS PANEL WITH CHROMATEX FINISH	MID-TONE GRAY
6	BRICK WHITE	DARK SLUPE
7	WINDOW WALL W/OP ANDELS	CLEAR
8	SCHREIBER WINDOW	CLEAR
9	AUTOMATIC SLIDER	CLEAR
10	PREFINISHED METAL W/TEMPERED GL.	GRAY
11	PREFINISHED LOUVER, TOP	MATCH ADJACENT FIN.
12	ILLUMINATED SIGNAGE	BLACK (DAY), RED (NIGHT)

**metal**  
MATA ARCHITECTS INC.

PROJECT: RIVERSIDE APARTMENTS  
ADDRESS: 2000 COLLINGWOOD ST.  
DATE: 01.13.2017  
DRAWING NO.: 12-037

DESIGNED BY: MATA ARCHITECTS  
DRAWN BY: MATA ARCHITECTS

EXTERIOR ELEVATION II

ONWARD ASSOCIATION  
ARCHITECTS  
1000 UNIVERSITY AVENUE  
SUITE 1000  
TORONTO, ONTARIO M5G 1R7

DATE: \_\_\_\_\_  
DESCRIPTION: \_\_\_\_\_

RIVERSIDE APARTMENTS -  
COLLINGWOOD