

- KEYED NOTES**
- 1 TAPERED INSULATION ON SOUTH FACADE OF LODGE ONLY REFER TO EXTERIOR WALL TYPES, TAPERED INSULATION SCHEDULE AND NODE
 - 2 MECHANICAL EQUIPMENT AND WASTE BIN ENCLOSURE REFER TO CIVIL/LANDSCAPE STRUCT, MECH. AND ARCH. PLANS AND WALL SECTIONS
 - 3 FLOOR OR SHAFF REFER TO FLOOR PLANS, 2/ADSE, AND STRUCT.
 - 4 USE CW FRAMING TO ALIGN WITH TOOD FRAME IN OTHER CASE 2/SE. THE FIN. HEIGHT TO BE COORDINATED WITH CW SURFACE.
 - 5 CEMENT FACED INSULATION
 - 6 SUMP/STORAGE ROOF DRAIN PIPE, REFER TO MECH.
 - 7 OVERFLOW ROOF DRAIN PIPE, REFER TO MECH.
 - 8 WALL HYDRANT, REFER TO MECH.
 - 9 MECHANICAL LODGE, REFER TO STRUCT., MECH. AND ARCH. WALL SECTIONS
 - 10 ANNUNCIATOR PANEL, REFER TO ELEC.
 - 11 PREFIN. MFL CAP FLASHING
 - 12 EXT. WALL MOUNTED LIGHT, REFER TO ELEC.
 - 13 EXT. WALL MOUNTED OUTLET, REFER TO ELEC.
 - 14 CORNER TRIM (TYP.)
 - 15 TRANSITION CURB CAP FLASHING
 - 16 ROOF MEMBRANE ON TRANSITION CURB
 - 17 2" V-GROOVE STUCCO-RESISTANT JOINT
 - 18 ROUGH OPENING OF SCUPPER TO BE WIDTH OF TWO FULL PANELS AND LOCATED BETWEEN TWO COMPLETE PANELS. SEE CASES
 - 19 ROUGH OPENING OF SCUPPER TO BE WIDTH OF ONE FULL PANEL AND LOCATED BETWEEN TWO COMPLETE PANELS. SEE CASES FOR TYP. 1/8 P. SCUPPER
 - 20 CENTER FINISHES ON WALL
 - 21 THESE CL. VERTICAL STUCCO REVEAL JOINTS WILL BE REFINISHED ON THE SOUTH FACADE FINAL LOCATIONS MUST BE APPROVED BY THE CONSULTANT

GENERAL SCHEDULE NOTES
1. WINDOW DIMENSIONS TO OUTSIDE FACE OF FRAME. REFER TO MANUFACTURER SPECIFICATIONS FOR REQUIRED CLEARANCE OF ROUGH OPENINGS. REFER TO EXTERIOR ELEVATIONS.

GENERAL SCHEDULE NOTES
1. DIMENSIONS ARE IN MILLIMETERS AND SHALL ALIGN WITH THE OUTSIDE FACE OF TAPERED INSULATION.
2. REFER TO EXTERIOR ELEVATION FOR IDENTIFICATION OF EACH TAPERED INSULATION TYPE.

1 15.10.20 ISSUED FOR CONSTRUCTION
NO. DATE REVISION/ISSUANCE

Cibinel Architecture Ltd
402-A STRANDBOROUGH AVENUE, WINNIPEG, MB R2L 5J6
T: 204-983-9115 F: 204-983-9202

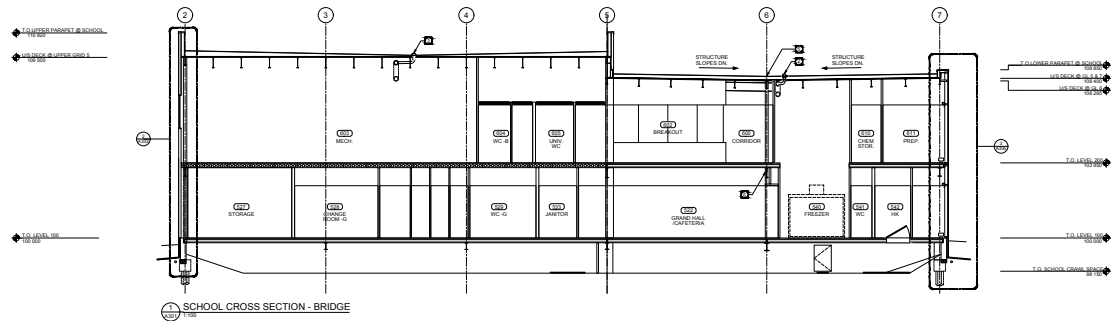


SOUTHEAST COLLEGIATE SCHOOL + LODGE

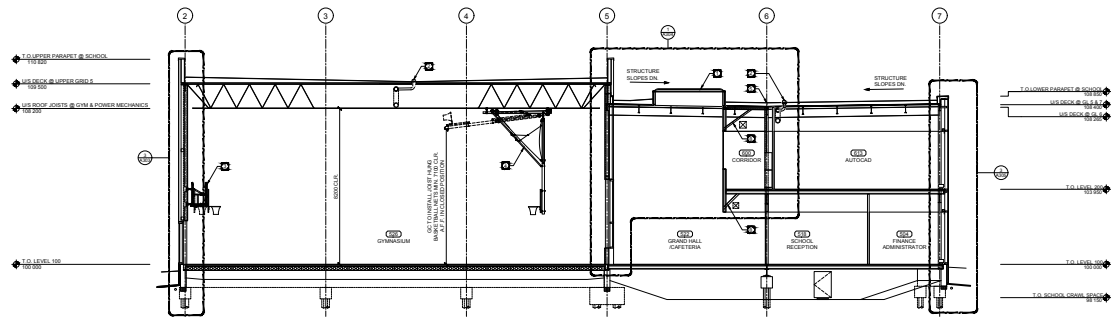
BUILDING ELEVATIONS

1304

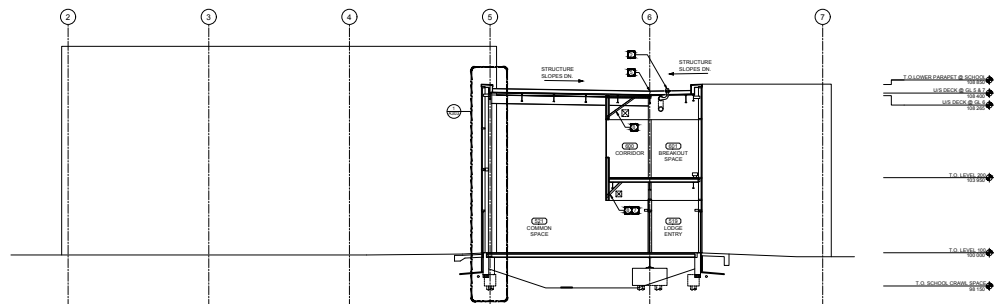
A202



1 SCHOOL CROSS SECTION - BRIDGE



2 SCHOOL CROSS SECTION - GYM



3 SCHOOL CROSS SECTION - STUDENT ENTRANCE

- GENERAL NOTES**
1. COLUMN WALLS WITH STUD WALLS TO BE DETAILED AS PER SA102 (TYP.)
 2. BOARD WALLS WITH STUD WALLS WHICH ARE TO RUN TO STUD WALLS THESE GD. PTL. SECS ARE TO BE FINISHED OUT TO MAINTAIN WALL SEPARATION SIM. TO SA102 (TYP.)

- KEYED NOTES**
- 1. SKYLIGHTS - REFER TO HA155 FOR LOCATION AND DTL. FROM
 - 2. ROOF DRAIN - REFER TO HA155 FOR LOCATION AND DTL. FROM
 - 3. WALL MOUNTED RISE FOLDING BASKETBALL BASKETSTOP - REFER TO STRUCT. AND A448
 - 4. CEILING MOUNTED BASKETBALL BASKETSTOP - REFER TO STRUCT. AND A447
 - 5. TYP. LOW POINT OF ROOF STRUCTURE BETWEEN G.L. B AND M
 - 6. DELTA BEAM - REFER TO STRUCT.
 - 7. DIAGONAL BRACING LOCATION TO BE COORDINATED WITH FLOOR BEAM BETWEEN G.L. L AND M - REFER TO STRUCT.
 - 8. DIAGONAL BRACING TO BE COORDINATED WITH MECH. AND ELEC. SERVICES - REFER TO STRUCT., MECH. AND ELEC.

1 15.10.20 ISSUED FOR CONSTRUCTION
 No. DATE REVISION / ISSUANCE

Cibinel Architecture Ltd
 402 A STRADSBROOK AVE. WINNEPEG, MB. R2G 3J6
 T. 204.983.9177 F. 204.983.8202



SOUTHEAST COLLEGIATE SCHOOL + LODGE

BUILDING SECTIONS

1304 **A301**

